

# Turn over a new leaf

## 新的旅程

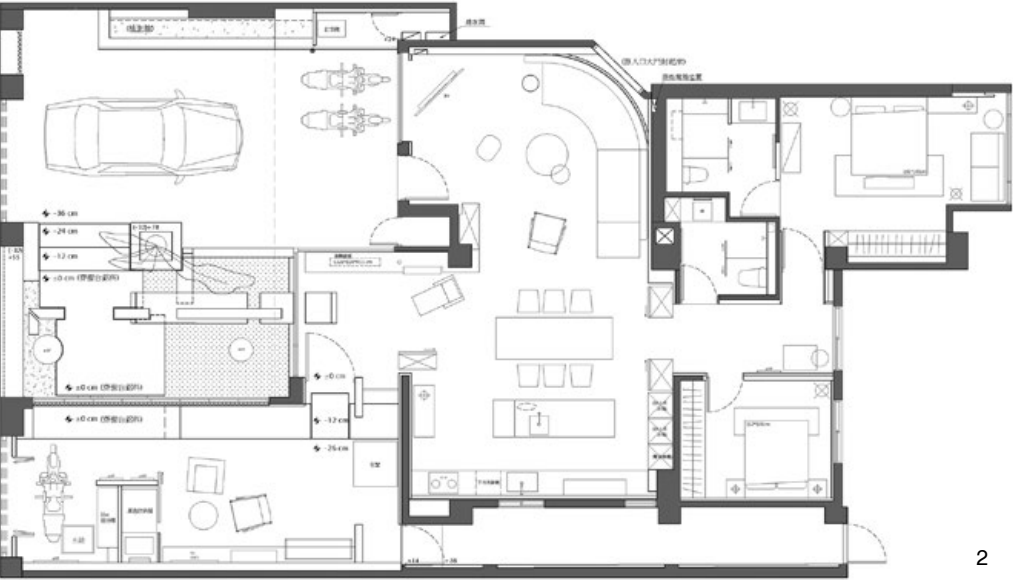
設 計 者」 瑋奕國際設計工程有限公司 / 方信原  
參 與 者」 洪于茹 鄭乃慈  
攝 影 者」 吳國豪  
空間性質」 住宅  
坐落位置」 台灣  
主要材料」 木皮染色、礦物塗料、石灰漆、舊木、毛絲面不鏽鋼、義大利白洞石

面 積」 室內 47 坪、戶外 23 坪

Designers」 Wei Yi International Design Associates / Ferran Fang  
Participant」 Teresa, Lucy  
Photographer」 Wu,Kuo-Hao  
Category」 Residence  
Location」 Taiwan  
Materials」 Veneer staining, mineral paint, aged wood, stainless steel, white travertine  
Size」 Interior 155.4m², outdoor 76.1m²



透過改造賦予 50 年屋齡的家宅新生，也象徵一段新的旅程。  
結構量體構建了空間骨架，細膩鋪陳的軟裝則詮釋了居住者對未來樸實靜謐的想望。



1. 本作為業主的舊家，期待透過雋永內斂的筆觸，描摹簡練又溫潤的現代棲居。2. 平面圖。  
1. As the family's old home, the expectation was to depict a simple and gentle modern dwelling that is timeless. 2. Floor plan.

位於台北的民生社區，因坐擁林蔭綠意、街廓規劃亦十分整齊，使其成為宜居之地，《新的旅程》一案即坐落於此。業主先前曾與瑋奕設計合作新居設計，雙方對於「美」有共同的追尋和信念，故再度委託團隊改造長輩居住的舊家。

### 重塑生活動線

方信原設計師提到，基地已約 50 年屋齡，戶外寬敞的庭院種植了一棵松樹，周遭的草坪卻因路旁茂盛的路樹遮擋住陽光，導致植被枯黃、毫無生氣；另一方面，又因單一出入口的設定關係，當訪客登門拜訪時，皆必須經過長輩的主要活動空間，私人生活容易受到干擾，有鑑於此，動線擊劃是本次改造計畫的首要重點，透過場域的再配置更大的彈性。

### Ferran Fang



瑋奕國際設計工程有限公司 / 方信原  
成立於 2003 年，設計師方信原畢業於國立藝術專科學校及中原大學室內設計系研究所碩士，曾任職於大元聯合建築暨設計事務所及李肇勳室內設計顧問有限公司。常透過城市旅遊的方式，進行城市人文的觀察及研究。事務所致力於將低度設計運用於各項規劃，並探討人們在低度的空間裡，各層面所產生的影響。  
公司作品多次登上國內外知名媒體，如德國《PLACES Of Spirit》、義大利《ELLE DECOR》、義大利《Marie Claire Italy》、紐西蘭《Home Living》、俄羅斯《Interior the best》等等刊物，並獲得如台灣 TID Award、香港 APIDA 獎、中國 IAI 獎、英國 WAF INSIDE Awards、德國 iF Award、德國 Red Dot Design Award、德國 German Design Award、義大利 A'Design 等國際大獎。  
於設計上持續以現代主義、宋代美學及侘寂文化為架構而成的低度設計為主軸，將文化、藝術、環保等相關元素，整合運用於生活及空間的設計中。

Wei Yi International Design Associates / Ferran Fang  
Ferran Fang graduated from the National College of Art and holds a master's degree for Interior Design from Chung Yuan University and then worked in well-known architectural and interior design firms prior to establishing Wei Yi International in 2003. Fang is interested in urbanism, culture and the humanities and often does research on related issues via frequent deep travel. The firm is committed to implementing minimalist design on various scales of projects and mindful about how the minimum design influences the use of space. The company's works have been frequently published by well-known magazines, locally and abroad, including Germany PLACES OF Spirit, Italian ELLE DÉCOR, Marie Claire Italy, Home Living, Interior the Best. Received award from Taiwan TID, Hong Kong APIDA, and various international award like WAF INSIDE award, iF Germany, Red Dot award, A'Design.  
The minimalist design principles originated in the framework of Modernism, Song Dynasty aesthetics and Wabi-Sabi culture notions to systematically integrate culture, art and environmental concerns into design.



綜觀本作原貌，停放重機、擺放賽車裝備及其他日常物品的儲物室緊鄰戶外庭院，雖裝設了可完全開闔的折窗結構，但因空間與大門互不相通，彼此無法有效串聯；方信原將儲物室改為業主與朋友聚會、交流的交誼區，再重新調整入門後的方向性，保留長輩習慣通行的出入口以及松樹景觀，但將無法接受陽光照射的草坪區新闢為通往交誼區的路線，同時於庭院增建兩道結構牆，其高度維繫了社交空間的隱私性，不過，精準的分割語彙保有視覺穿透感之餘，更巧妙地將全景一分為二，並利用平台量體鏈結內外。戶外園藝經過設計團隊的巧手修整，以植生牆重現，蔥鬱綠意與城市景致相互映襯，讓家宅充滿生機。

### 簡約卻富言變化

進入居者主要的活動空間後會發現客廳底牆為弧形曲線，方信原進一步解釋，此道形似拋物線的牆體收整畫面，令視線圓滑且延伸，放大體感之餘，無形間也兼具了指引效果；考慮到房屋樓高較低矮，再加上中央有一支不可拆卸的 T 字樑，設計師刻意增建另一支假樑構成「田字型」的天花板形式，並將其以傾斜角度呈現，塑造出「屋頂」意象，其對稱型態顯現出設計團隊追求嚴謹結構之美的堅持，而斜天花亦有助於拉抬空間高度；而中島島台則布局於十字型樑的居中，塑造一種平衡卻具戲劇性的畫面張力。

3. 保留既存的老松樹，新增的結構牆將景致切割，帶來一種若即若離的視覺感受。4. 將原始儲藏空間改為儲物兼社交場域，新闢的入口以及可完全敞開的折窗使室內外順暢連結。5.6. 漂浮平台是構築空間的主要設計手法，藉由精準的高低差計算，可身兼行走平台或乘坐載體。

3. The old pine tree was preserved, and the new structural wall is alien to the landscape view but brings in a visual sense of perception. 4. Transforming the storage space into social space, with a new entry and fully open folding partitions creates a direct connection between the interior and the outside. 5.6. The floating platform was the main design intervention for constructing the outdoor space. With its carefully calculated elevation changes, it can be used as a walking path or a seating platform.



氛圍的重新形塑亦為本次關注的另一焦點，透過材質的全面更新，呈現內心所期待的家宅樣貌。上述所提的田字型天花板材飾以台灣老檜木，天然肌理厚實了室內的自然底蘊，清新木頭香氣則與生活相伴，構築簡單卻不失溫暖氣息的氛圍；考量到本案主要作為服務長輩日常起居的空間，牆面襯底特地委由塗料廠商打版客製，調和了中性灰與和煦米黃色調，藉此協調冷冽跟柔和的佔比。而廚房底牆則選擇天然洞石，色澤溫和且紋理凹凸具層次，細膩營造沉靜樸實的個性，也捎來濃厚的人文質感。

### 結構的運動與交織

瑋奕設計團隊十分擅長運用結構做出場域的呼應，極具雕塑感的片狀、塊狀量體構築了室內的韻律，俐落整合所有立面，隱於其中的脫溝縫使機能空間彼此獨立又串聯。入口櫃體結合了貓跳台與壁爐功能，順暢銜接起動線；業主珍藏的日本製 S2000 跑車引擎被作為裝置藝術品，置放於公私領域的交界處，並將跑車數據秀於玻璃隔斷上，確保端景的視線穿透外，也成為業主興趣與品味的展示舞台。

方信原說道，漂浮平台則扮演著構建社交場域的關鍵角色，提供行走使用外，精準的高度設定亦可成為乘坐的載體，方便大家交流互動，分離又隱約連接的細節在在突顯了設計團隊縝密的思緒，也添上一抹詩意層次。方信原認為，住宅的改造就如同一段新的旅程，雖然時光流逝、萬物更迭，但那份記憶中的美好，永恆不變。採訪 | 陳映蓁







7

7. 運用相似的語彙貫穿整個住宅，結構的脫溝縫創造了立面層次，也強化量體的雕塑性。8. 琿奕設計十分重視結構的互襯，透過嚴謹思維打造協調的家宅樣貌。9. 業主珍藏的跑車引擎被展示於公私領域交界的端景處，玻璃上則映著引擎的相關數據。10. 結構結合貓跳台，賦予櫃體更多元的機能。

7. Using a similar vocabulary throughout the project, the reveal detail of the framework creates a hierarchy of the elevations and reinforces the sculptural nature of the volume. 8. Wei Yi Design attaches great importance to the relationship between building elements to create a harmonious appearance of home through a rigorous design process. 9. The owner's collection of sports car engines is displayed at the connection point between the public and private zones with the data about an engine projected onto the glass. 10. The structure is combined with the cat jumping platform to give the casework diverse functions.



8



9

The Minsheng neighborhood, it is one of the most comfortable areas in Taipei City because of its tree-lined greenery and neat street planning, and the project "Turn over a new leaf" is located here. The owner previously collaborated with Wei Yi Design on the design of the new home, and both parties shared the same pursuit and belief in "beauty", so they once again commissioned the team to renovate the old home where their elders lived.

### Reshape the Circulation

The existing house is about 50 years old with a pine tree in the spacious outdoor courtyard, but the surrounding lawn was blocked by the overgrown street trees resulting in a yellowed and lifeless vegetation. Also due to the existing single entrance layout, visitors had to pass through the main space of the elders where their daily activities and privacy was disturbed. Therefore, the designers revised the circulation as the prime focus of this renovation project, seeking greater flexibility through the reconfiguration of the space.

Designer Fang transformed the storage room into a social area for friends' gatherings, then adjusted the circulation direction yet retained the pine tree landscape path that elders were accustomed to. He opened up the lawn area that cannot receive sunlight as a new route to the social area. At the same time he added two structural walls in the courtyard to ensure the privacy of the social space.

The precise subdivision not only retains the sense of visual penetration, but also cleverly divides the landscape together with the use of a platform to connect the interior and outdoor spaces. The exterior gardening has been skillfully renewed by the design team, with a planted wall that complements the lush greenery and the cityscape, giving the home a vibrant life.



10



### Simple yet rich in variation

After entering the main activity space, one will find the back wall of the living room is curved. Fang explained that this parabola-like wall is retracted and straightens out the perspective, and it also has an imperceptible guiding effect. Considering the existing low ceiling height and the fact that there is an unmovable T-beam in the center, the designer deliberately added a false beam to define the form of the ceiling and present it at an angle to create the image of a "roof". The symmetrical form expresses the design team's insistence on pursuing the beauty of a rigorous structure. The sloping ceiling also helps raise the height of the space. The island counter is centered on a cross-shaped beam, creating a balanced yet dramatic tension.

The remaking of the atmospheric character is another focus of the project through the comprehensive renewal of finish materials, to present the desired appearance of the home. The ceiling is finished with reclaimed Taiwanese cypress. Its rich texture and natural wood aroma offers a simple but warm atmosphere. Considering that this project is the daily living space for the elderly, the wall finish was specially commissioned by the paint manufacturer to customize the texture with neutral gray and warm beige tones. The dining area is bounded by a natural travertine wall with a mild color and texture which delicately creates a quiet and simple personality and humanistic character.



11. 全案色調灰中帶米，簡練樸實。12. 此處為居住者主要通行的出入口，拋物線牆體令視線柔和，也具引導作用。  
11. The overall color scheme is made up of warm gray tones, concise and simple. 12. View of the main entry where the gentle curved wall also serves as a guide.





13



14



15

13. 有鑑於空間既存不可拆除的 T 字樑，設計師刻意多做一支假樑，使其成為田字型，並以斜天花型態呈現。14. 室內所有結構講究對稱性，旨在營造一種平衡。15. 廚房底牆的洞石材質，跟斜天花的檜木相映成趣，加深空間的自然氣息。16. 特意將臥室的門片量體退後，並以灰綠調性塑造宛如隧道的沉澱意境。17. 臥室一隅。簡單不失溫馨。18. 主臥衛浴。

13. Considering the existence of a non-removable T-beam in the space, the designer deliberately placed an additional false beam and presented it in the form of an oblique ceiling. 14. All interior framework and the structure are symmetrical, intended to create a balanced prospect. 15. The travertine finish of the kitchen wall contrasts with the cypress wood of the sloping ceiling, deepening the natural atmosphere of the space. 16. The bedroom door is deliberately recessed. The gray and green tones were used to create an artistic tunnel like perception. 17. View of the bedroom. 18. Master bathroom.

### The interlinking of structures

The design team is skillful at working with volumes in space, and the highly sculptural block volumes build the rhythm of the interior, neatly integrating all the elevations. The reveal detail joints make the functional spaces independent of each other yet connected. The Japanese-made S2000 sports car engine from the owner's collection is a piece of artwork displayed at the junction of the public and private zone. The sports car information data is projected on the glass as privacy pattern on the partition, and it also becomes a stage to display the owner's interests and tastes.

The floating platform plays a key role in creating social spaces, providing not only a means of the path but also via the precise height settings that can serve as seating to facilitate gathering interaction. The subtle yet distinct connections and separations highlight the meticulous thoughts of the design team and add a layer of poetic depth. Designer Fang believes that the transformation of a residence is analogous to boarding a new journey. Although time passes and things change, the beauty of those memories remains eternal and unchanging.



16

### 建材分析 Material Analysis

1. 室內材料全面更新，整體色調灰中帶暖。2. 主要利用礦物塗料做大面積的打底，但塗料特性有細微差異。3. 廚房上方的斜天花表材為台灣老檜木，天然紋理與木材香氣令人感到舒暢。  
1. The interior finishes have been fully updated, and the overall color scheme is dominated with warm gray tones. 2. Mineral paint is mainly used for large-area backgrounds, but there are subtle variations in its characteristics. 3. The sloping ceiling above the kitchen is made of recycled Taiwanese cypress, and the natural texture and wood aroma offers calm.

### 溝通重點 Communication Note

1. 本案主要為長輩居住的空間，設計調性需盡可能平衡。2. 動線重整與氛圍形塑為最重要的兩大面向。3. 為使長輩保有生活的隱私，除原有出入口外，另規劃一條訪客使用的動線。  
1. This project is mainly for the elderly to live, so the design and functional requirements needed to be balanced. 2. Circulation reorganization and atmosphere shaping were the two most important aspects of the project. 3. To retain the privacy of the elders, in addition to the original entrance, a separate circulation path for visitors was planned.



17



18