

An Infiltrating Forest

森沁

設計者」雲邑室內設計 / 李中霖

參與者」游琦君

攝影者」狐色影像工作室 / 徐詠倫

空間性質」住宅

坐落位置」台灣

主要材料」天然石材、鐵件、鋼刷木皮、環保面漆、海島型木地板

面積」84 坪

Designers」YUN-YIH Design Company / Ray Lee

Participant」YU CHI-CHUN

Photographer」WHOSE IMAGE STUDIO / HSU YUNG-LUN

Category」Residence

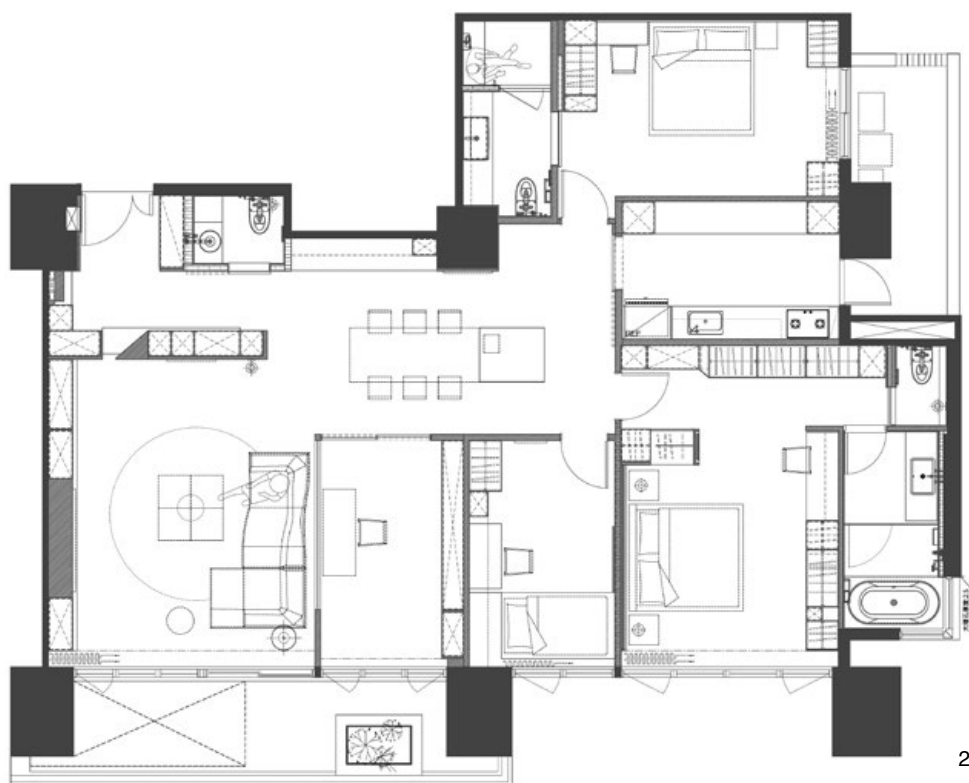
Location」Taiwan

Materials」Natural stone, metal, wood veneer, paint, wood flooring

Size」277.6m²



以匠心織就生活詩篇，平衡風水美學與機能，打造溫潤現代的居家港灣。

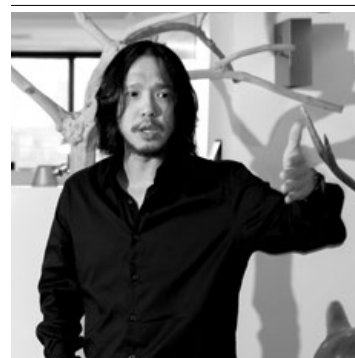


1. 多功能室如玻璃盒子般，以玻璃形塑通透視野，沙發後方則鋪上木皮，呼應「背後有靠」的風水哲學。2. 平面圖。

1. The multifunctional room resembles a glass box with transparent view, while wood veneer is laid behind the sofa, reflecting the Feng Shui philosophy of having 'support from behind.' 2. Floor Plan.

家，是承載生活的容器，亦是安放心靈的港灣。在都市喧囂的匆忙中，讓人卸下疲憊，平衡機能與美學回應居住者對生活的嚮往與精神寄託。設計，不只是形式表現，更是將屋主對家的期盼，轉譯成可觸可感的日常詩篇，當夜幕低垂，燈火漸次亮起，成為城市中一處安頓身心的所在，見證平凡日子裡的溫潤暖意。本案位於交通便利的精華地段，十年光陰在建築的肌理上留下痕跡，原始結構方正平整，設計師以匠心重新梳理空間脈絡，在風水、收納與現代美學之間，織就哲學的生活畫卷。

Ray Lee



雲邑室內設計 / 李中霖

雲邑室內設計總監，中原大學研究所畢業，亞洲大學兼任講師，中原大學兼任講師，逢甲大學兼任講師。

CSID 第十九屆、第二十屆、第二十二屆理事。

雲邑室內設計獲選德國 iF 獎 2017-2021 年「全球 interior design Top25 設計公司」。設計團隊作品，獲 2016 年德國 iF 金獎、2014 至 2019 年連續六年德國 iF 獎、德國紅點獎、德國 ICON 金獎、美國 IDA 金獎、日本 JCD 銀獎、日本 GOOD DESIGN 獎、英國 FX 獎、韓國 K-DESIGN 金獎、義大利 A'DESIGN 金獎、亞洲設計獎金獎、台灣 TID 獎 (2007-2018 年)、香港 APIDA 銅獎、上海金外滩獎金獎等肯定。

YUN-YIH Design Company / Ray Lee

Design Director of YUN-YIH Design Company, graduated from Chung Yuan Christian University, adjunct lecturer at Asia University, Chung Yuan Christian University, and Feng Chia University.

Ray Lee served as CSID 19th, 20th, and 22nd board member.

YUN-YIH Design Company was selected as one of the 'Top 25 Global Interior Design Companies' for the iF DESIGN AWARD in Germany from 2017 to 2021.

The company has received numerous accolades, including the iF DESIGN AWARD Gold in 2016, the iF DESIGN AWARD for six consecutive years from 2014 to 2019, the Red Dot Award, the Iconic Gold Awards in Germany, the IDA Gold Awards in the United States, the JCD Silver Award in Japan, the GOOD DESIGN Award in Japan, the FX Awards in the United Kingdom, the K-DESIGN Gold Award in South Korea, the A'Design Gold Award in Italy, the Gold Award at the Asia Design Awards, the TID Award in Taiwan (2007-2018), the APIDA Bronze Award in Hong Kong, and the Gold Award at the Shanghai Bund Awards, among other recognitions.



3. 依循風水講究，以錯落櫃體巧妙遮擋，並精心導引光影流轉，讓光自然漫入，兼顧空間美感。4. 為讓玄關不顯擁擠，設計師刻意縮小廁所空間，並設置木色推門形塑平整視景。5. 天花置入黑色燈帶引導動線視野，兼具實用與視覺美感。6. 黑色鐵件框圍玻璃場景，勾勒精緻質感，在光影映照下充滿雅韻。

3. Following the principles of Feng Shui, cleverly designed shelving discreetly conceals and expertly guides the flow of light and shadow, allowing natural light to gently fill the space while maintaining aesthetic appeal. 4. The designer intentionally minimized the vestibule bathroom space and installed wooden sliding doors to create a seamless visual flow. 5. Black LED strips were integrated into the ceiling to guide the line of sight, combining practicality with visual appeal. 6. The black iron frame encloses the glass scene, outlining a delicate elegance under the interplay of light and shadow.

以機能為本 融合風水與現代美學

設計師提到，由於男主人十分講究風水，因此如何將空間實用性與之整合是一大考量。基於傳統風水忌諱「開門見山」，設計師規劃獨立玄關，利用錯落櫃體創造視覺層次，既化解風水疑慮，亦賦予穿鞋椅、收納櫃等機能。特別的是，不同於常見全身鏡，玄關改設圓形鏡面與弧形抽屜，呼應屋主對「圓滿」的喜好，下方則搭配灰色噴漆材質，從簡約中見精緻細節。

公領域開放式布局，客廳、餐廳與多功能室相互串聯，並在多功能室設置輕透玻璃，佐以精緻黑鐵框圍，既劃分場域又維持視覺流暢，光影在游走間，勾勒出虛實相映的意境。電視牆採用木皮與石材相搭，平衡冷暖視感，側邊嵌入白色鐵件櫃，以大小不一的櫃體比例，滿足多元的風水擺飾需求；隱藏式收納櫃則沿牆延伸，確保雜物能妥善歸位。設計師提及，屋主有大量收藏品，因此局部設計開放櫃展示，其餘則改為暗櫃讓視覺保持清爽。

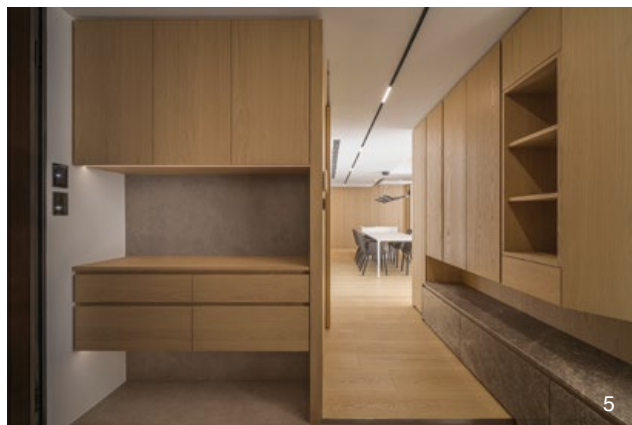
餐廳中島與餐桌以白色為主，跳脫木質調的溫潤，為空間注入現代感。上方懸掛可 360 度旋轉的造型燈具，兼具照明與趣味性；廚房則以暗門設計隱藏，避免油煙外溢的同時，構畫齊整視野。此外，由於女主人偏好易清理家具，因此餐椅特別選用皮革材質，而男主人喜歡藍色，所以在沙發滾邊藏了一抹藍作為生活驚喜。

因應家庭成員的過敏體質，全室選用環保塗料與低甲醛木皮，避免地毯或過多布質軟件，並以平整表面減少灰塵堆積。色調上，鋪陳淺木色為基底，搭配灰白色石材與鐵件，營造飯店般的簡約質感。值得一提的是，電視牆平台、餐廳中島與茶几皆採用同一塊石材，維持風格的連貫性。

機能與個性化的優雅詮釋

主臥背牆鋪陳深藍色呼應男主人喜好，其特殊塗料呈現細膩紋理，藉無接縫設計提升整體感。入口處小玄關結合木作櫃與超白玻璃，亦規劃掛衣桿與穿衣鏡，滿足風水「遮擋」與使用需求。衛浴區將馬桶間與淋浴區分離，並選用霧面磁磚與大理石檯面，混搭深淺色調平衡男女主人的偏好。客臥兼作長輩房，亦能隨需而變，化為休閒雅室或彈性空間。銀灰背牆營造輕柔氛圍，並在窗邊設置 U 形拉桿，滿足屋主偶爾的健身需求。設計師笑稱：「這是工業風元素融入現代居家的有趣嘗試，我們確保結構穩固，同時不破壞空間美感。」

從規劃到完工歷時兩百多天，設計師坦言最大困難在於「收納與風水的取捨」。例如，客廳僅部分櫃體開放展示，其餘改為隱藏收納，說服屋主「留白更能突顯收藏品的價值」；多功能室靠窗處設置祭拜區，同時以玻璃鐵件隔間引光入室，兼顧信仰與空間感。最終，舊屋蛻變為簡約而實用的理想住宅，每一處設計皆呼應屋主需求。正如設計師所言，希望回家就像入住精品飯店，既能感受設計美感，也能在細節中體現對生活的貼心考量。採訪」林靖謬





7. 客廳電視牆一側裝設白色鐵件層架，以大小不一的比例空間，滿足多樣的擺設小物。8. 電視牆鋪設溫潤木皮與冷冽質感石材，在輕重間達到視覺平衡。
7. On one side of the living room entertainment wall, a white iron shelving unit featuring varying dimensions to accommodate a diverse array of decorative items. 8. The television wall is adorned with warm wood veneer and contrasting cool, textured stone, achieving a visual balance between lightness and heaviness.

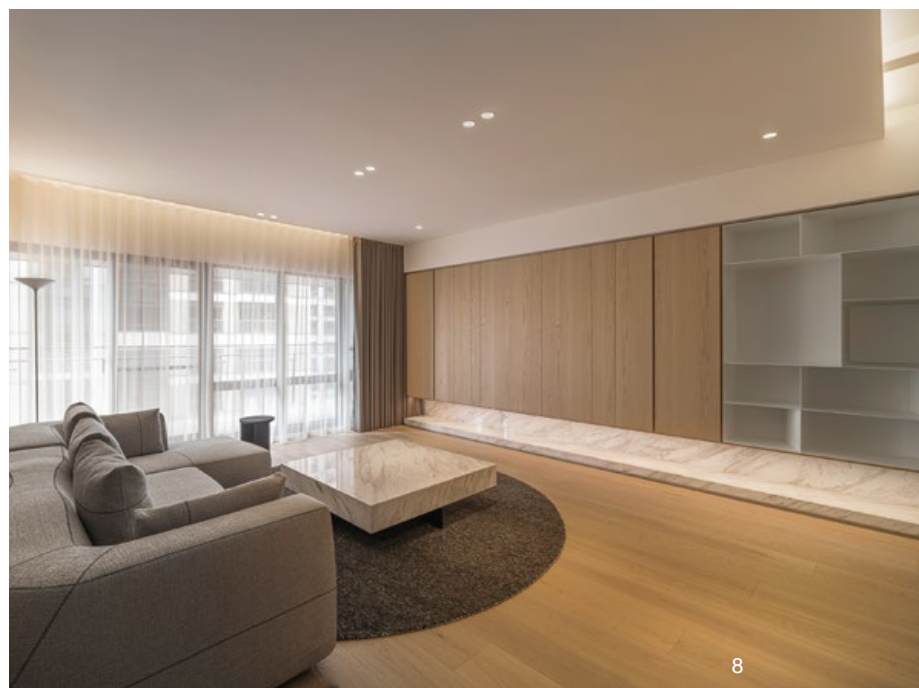


Home is a vessel that carries the essence of life and serves as a harbor for the soul. Balanced functionality with aesthetics responds to dwellers' aspirations for life and spiritual sanctuary. Design is not merely an expression of form, it is the translation of the owner's aspirations into tangible and perceptible daily poetry. As night falls and the lights gradually glow, home transforms into a place of solace for the body and mind within the city, witnessing the warm and gentle essence of ordinary days.

This project is located in a prime area with convenient transportation. The existing structure was orderly and in fair condition. The designer thoughtfully reorganized the spatial context, weaving a philosophical tapestry of life between Feng Shui, storage, and modern aesthetics.

Functionality integrating Feng Shui and modern aesthetics

The designer mentioned that since the owner places great emphasis on Feng Shui, a major consideration was how to integrate the practicality of the space with these principles. The designer planned an independent entrance, utilizing staggered cabinet structures with different visual levels created, which not only alleviates Feng Shui concerns but also provides functionality for items such as shoe benches and storage cabinets. And notably, a circular mirror and curved cabinets with revealing exquisite details reflect the homeowner's preference for 'completeness'.





9



10



11

9. 全室鋪陳低甲醛木皮與環保塗料，細心摒除易致敏材質，以純淨基調勾畫溫潤雅緻的居所。10. 餐桌上方懸掛的造型燈飾，以 360 度旋轉之姿，為用餐時光增添幾分靈動雅趣。11. 多功能室收納櫃體，門片裝飾格柵延伸視線，並整合線條注入趣味感；靠窗側櫃體布置為神明擺設區。12. 餐廳中島與餐桌鋪陳淨白色調，巧妙跳脫木質調的溫潤質感，為用餐空間勾勒出簡約的現代韻致。

9. The entire project was finished with low VOC products and environmentally friendly coatings, meticulously eliminating materials that may cause allergies, creating a refined and elegant living space. 10. The decorative pendant light above the dining table adds a touch of elegance and dynamism to the dining experience. 11. The multifunctional storage cabinet's decorative grilles extend the line of sight and integrate lines to inject a sense of playfulness. The cabinet arranged by the window serves as a prayer hall. 12. The pure white tone island counter and dining table cleverly contrasting with the warm texture of wood, delineating a minimalist modern elegance.

The open layout of the public domain links the living, dining, and multifunctional rooms. The multifunctional room features translucent glass adorned with delicate black iron framing, which delineates the spaces while maintaining visual continuity. The interplay of light and shadow creates an ambience that juxtaposes the virtual and the real. The entertainment wall is designed with a combination of wood veneer and stone, balancing the perception of coolness and warmth. Embedded on the sides are white iron cabinets with varying proportions to meet diverse Feng Shui decoration needs. The concealed storage cabinets extend along the wall ensures that miscellaneous items can be properly organized.

The central island counter and dining tables are predominantly white, breaking away from the warm tones of wood to infuse the space with a sense of modernity. A pendant light fixtures that can rotate 360 degrees offers both illumination and an element of interest.

The kitchen is enclosed with a concealed hidden door to prevent the escape of grease and smoke while maintaining a tidy visual perspective. Additionally, the dining chairs were specifically made of leather for easy-to-clean and maintenance. A subtle touch of blue incorporated into the sofa edging details adds an element of surprise to the living space.

In response to the allergic condition of family members, eco-friendly paints and low VOC wood veneers were selected throughout the room to avoid using carpets and lessen the fabric type of furnishings to reduce dust accumulation. In terms of color scheme, a light wood tone serves as the foundation, complemented by gray and white stone materials and metal, creating a minimalist quality resonant of a hotel.



建材分析 Material Analysis

1. 選用低甲醛木皮與環保塗料等健康建材，打造過敏友善的居住環境。2. 電視牆、中島與茶几採用同款石材，構建空間視覺的連貫性，達到質感石材的運用。3. 多功能室採用輕透玻璃佐以黑鐵框，兼顧採光與現代工業風美感。

1. The choice of low VOC materials and eco-friendly coatings creates a friendly and healthier living environment. 2. The television wall, island counter, and coffee table are made of the same type of textured stone, establishing visual continuity in the space. 3. The multipurpose room features translucent glass with black iron frames, balancing natural light with the aesthetic of modern industrial style.

溝通重點 Communication Note

1. 巧妙化解「開門見山」的忌諱，玄關圓鏡櫃體兼顧實用與圓滿寓意，讓風水與機能共融。2. 主臥深藍背牆呼應男主人喜好；彈性客臥滿足生活需求，詮釋個性化空間。3. 從細節處提升整體質感，適當留白與隱藏，賦予簡約純粹的居家視景。

1. Ingeniously resolve the taboo of "straight openness" spatial arrangement, and add the round mirror cabinet at entry vestibule to balance practicality and the auspicious meaning of completeness, allowing the integration of Feng Shui and functionality. 2. The deep blue accent wall in the master bedroom reflects the owner's preferences; the flexible guest room meets living needs and re-interprets a personalized space. 3. Enhancing the overall quality through attention to details with an appropriate void space bestowing a simple and pure home atmosphere.



13



14



15



13. 主臥背牆鋪覆深藍色彩，以優美紋理豐富表情，蘊含屋主偏好與個性色彩。14. 基於風水需求，主臥布劃小玄關，以木作牆局部遮掩，裝設超白玻璃穿引光線，同時置入 L 型掛衣架及全身鏡，兼具實用機能。15. 衛浴空間以霧面磁磚與天然大理石台面巧妙搭配，深淺色調的交織既彰顯現代雅韻，又完美調和男女主人的審美意趣。16. 客臥窗邊置入 U 型拉桿，滿足屋主的健身習慣。

13. The master bedroom is featured in a deep blue color, rich in elegant textures that reflect the owner's preferences and style. 14. Based on Feng Shui requirements, the master bedroom is delineated with a small foyer, partially concealed by a wooden wall with ultra-white glass to allow light transmission. Also incorporated was an L-shaped coat rack and a full-length mirror, combining practicality and functionality. 15. The bathroom space skillfully integrates matte porcelain tiles with natural marble countertops, the light and dark tones not only highlight a modern elegance but also perfectly harmonize the aesthetic tastes of the owners. 16. A U-shaped pull rod was placed by the window in the guest room to accommodate the owner's exercise habits.

An elegant interpretation of functionality and personalization

The master bedroom features a deep blue color wall that resonates with the owner's preferences. The unique paint showcases a delicate texture, and the seamless design enhances the overall aesthetic. The small foyer at the entrance combines wooden cabinetry, Feng Shui principles of 'obscuration' and practical usage requirements were followed. The bathroom separates the toilet from the shower area, using matte tiles and marble countertops to create a balanced blend of light and dark tones that cater to the preferences of the couple. The silver-gray color schemed guest bedroom also functions as an elder's room, adaptable to various needs, it can transform into a leisure lounge or a flexible space.

The project took over two hundred days from planning to completion. The designer candidly admitted that the greatest design challenge was the trade-off between storage and Feng Shui. For example, only a portion of the cabinets in the living room are open for display, while most of the area acts as concealed storage as the designer convinced the owner that "the blank space" can better highlight the value of the collections. The worship area was set up by the window in the multipurpose room, where glass and iron partitions allow light to enter the space, balancing faith with a sense of space.

Ultimately, the old house was transformed into an ideal residence that is both minimalist and functional, with each design element responding to the needs of the family. As the designer mentioned, the hope was to resemble a boutique hotel stay, where one can not only appreciate the beauty of design but also experience thoughtful considerations for life reflected in the details.